



Menstrual Hygiene Day

Promote and create awareness for female's right to hygienically manage their menstruation in privacy, safety and dignity.

Menstruation facts



Girls usually have their **first menstrual cycle at the age of 12**. Women reach the menopausal stage between the age of **45 and 55**. That is when the menstruation stops.



16% of women complain about the lack of feminine hygiene units.*



Most women spend averagely 8 hours in the office on working days.
Per working day = 2 pads x 5 days
That is about **10 pads** per working week per person!



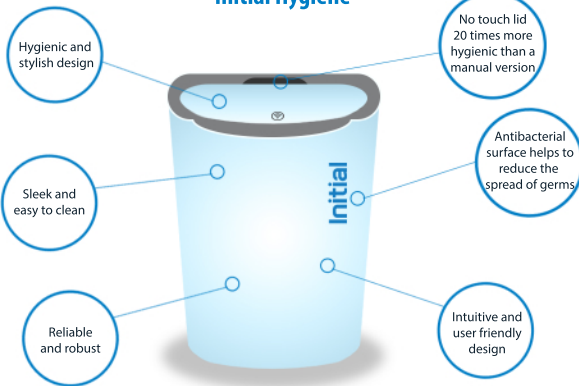
For health and hygiene purposes, women are advised to change to a fresh sanitary pad **every 4 hours**.



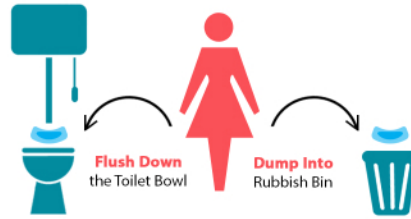
Menstrual flows can last for **an average of 5 days**.

*Information based on independent research carried out in 2013 by Added Value © Added Value Limited 2013. All rights reserved.

The revolutionary features of the Feminine Hygiene Unit by Initial Hygiene



What could happen when Feminine Hygiene Units are not provided in the female washroom?

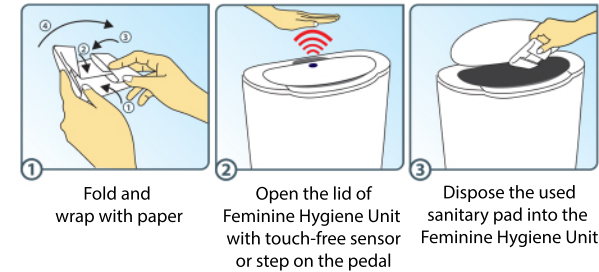


- The consequences of disposing the used sanitary pads incorrectly**
- Used pads flushed down the toilet bowl **pollutes the sea and harm the environment**
 - Some gets stuck, resulting in **expenses** to remove blockage
 - Closure of washroom for repairs = **Inconvenience**
 - Foul smells** being emitted resulting in washroom visitors feeling uncomfortable
 - Attract flying insects that lead to **pest infestations**
 - Flying insects that harbour on the waste will spread infections and **increase cross contamination** resulting in employees being sick

Which eventually, lead to...



So, what is the proper way of disposing used sanitary pads?



The DOs and DON'Ts when using the Feminine Hygiene Unit

- DO** wrap the used sanitary pads with paper
- DO** close the lid after disposing
- DO** wash your hands after disposing the used sanitary pads
- DON'T** dispose food, cigarette butts and baby diapers into the feminine hygiene unit
- DON'T** place the used sanitary pads on top of the feminine hygiene unit